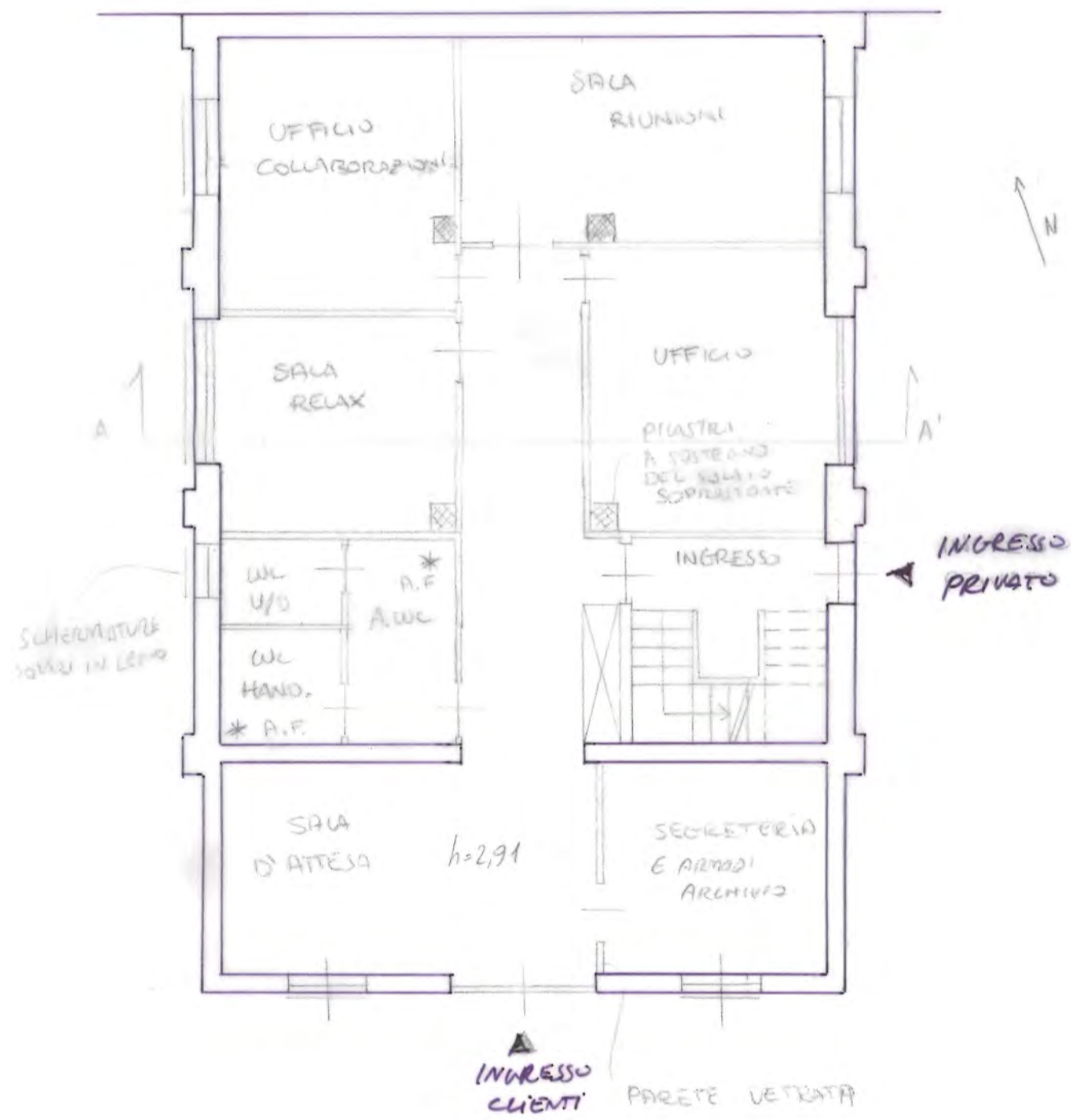
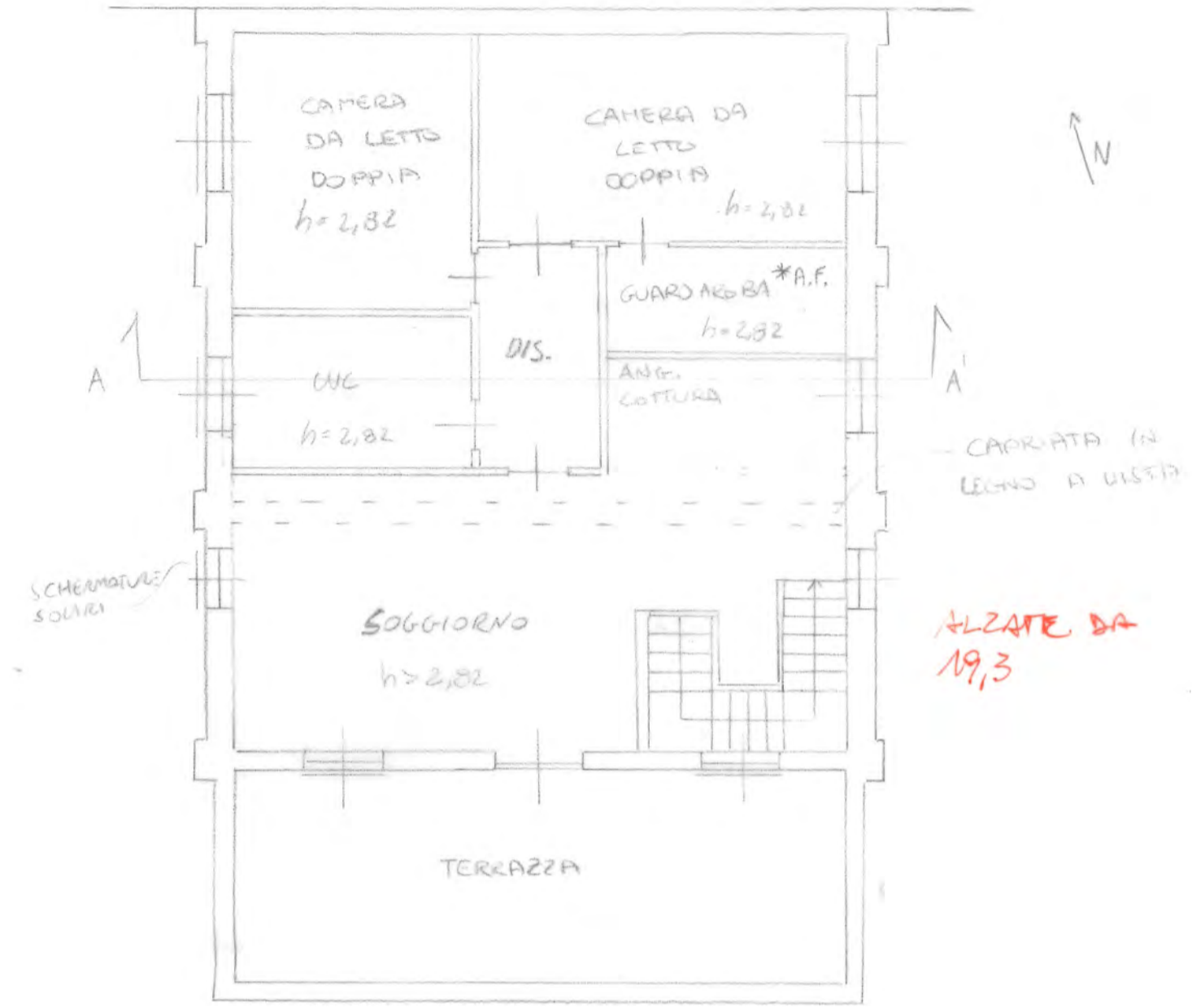


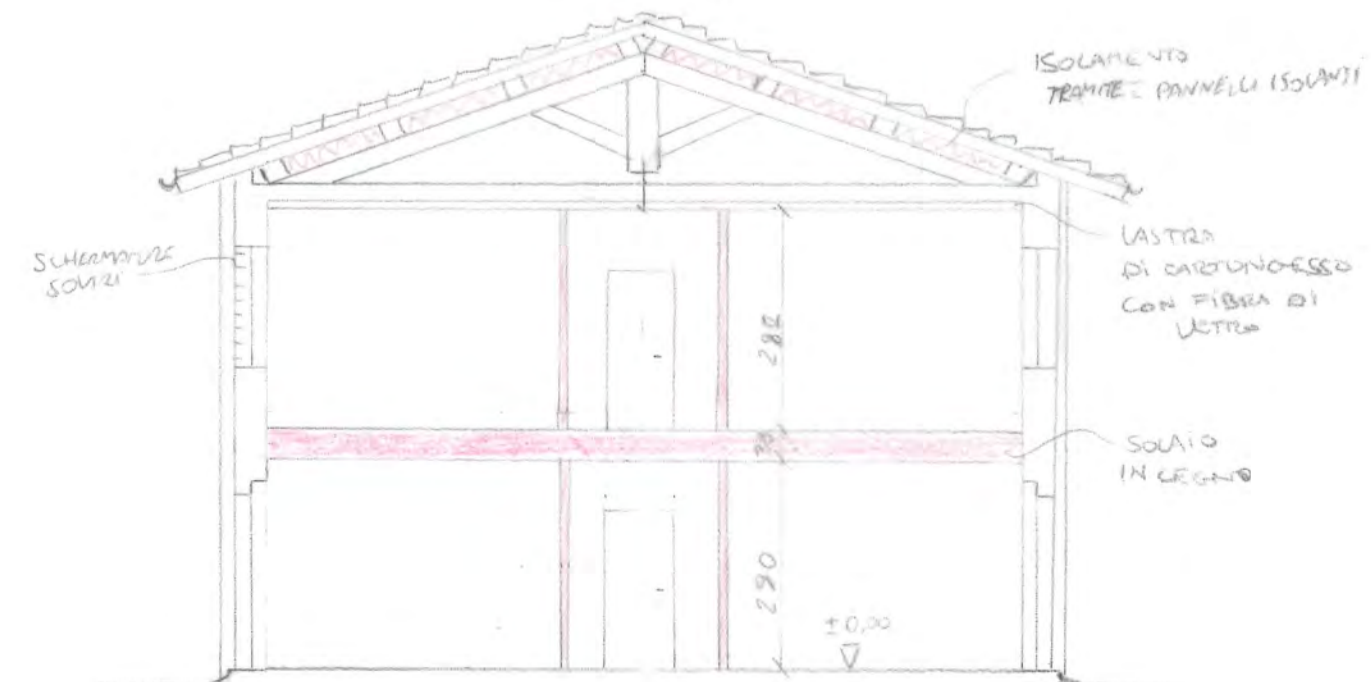
PIANTA PIANO TERRA SCALA 1:100
IN PROGETTO



PIANTA PIANO PRIMO SCALA 1:100
IN PROGETTO

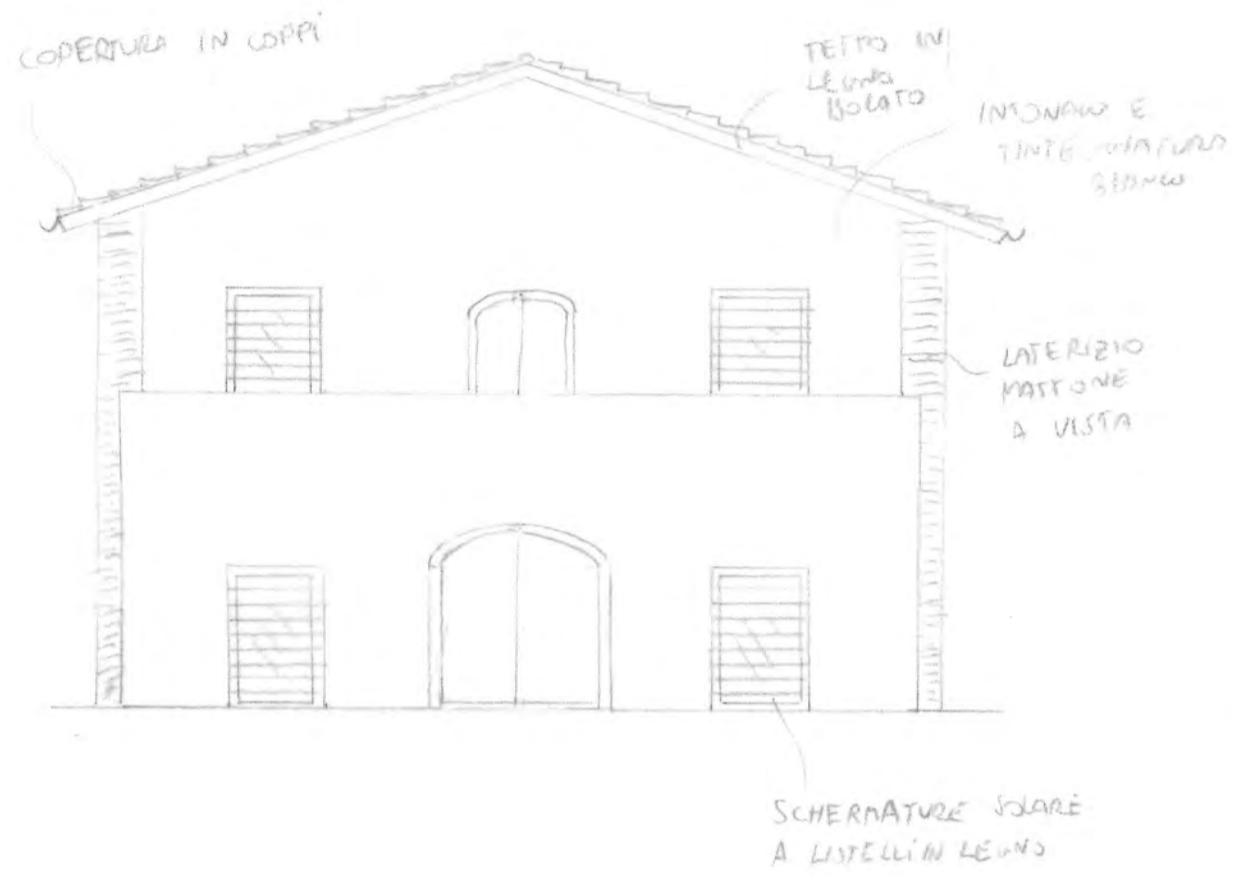


SEZIONE A-A' SCALA 1:100

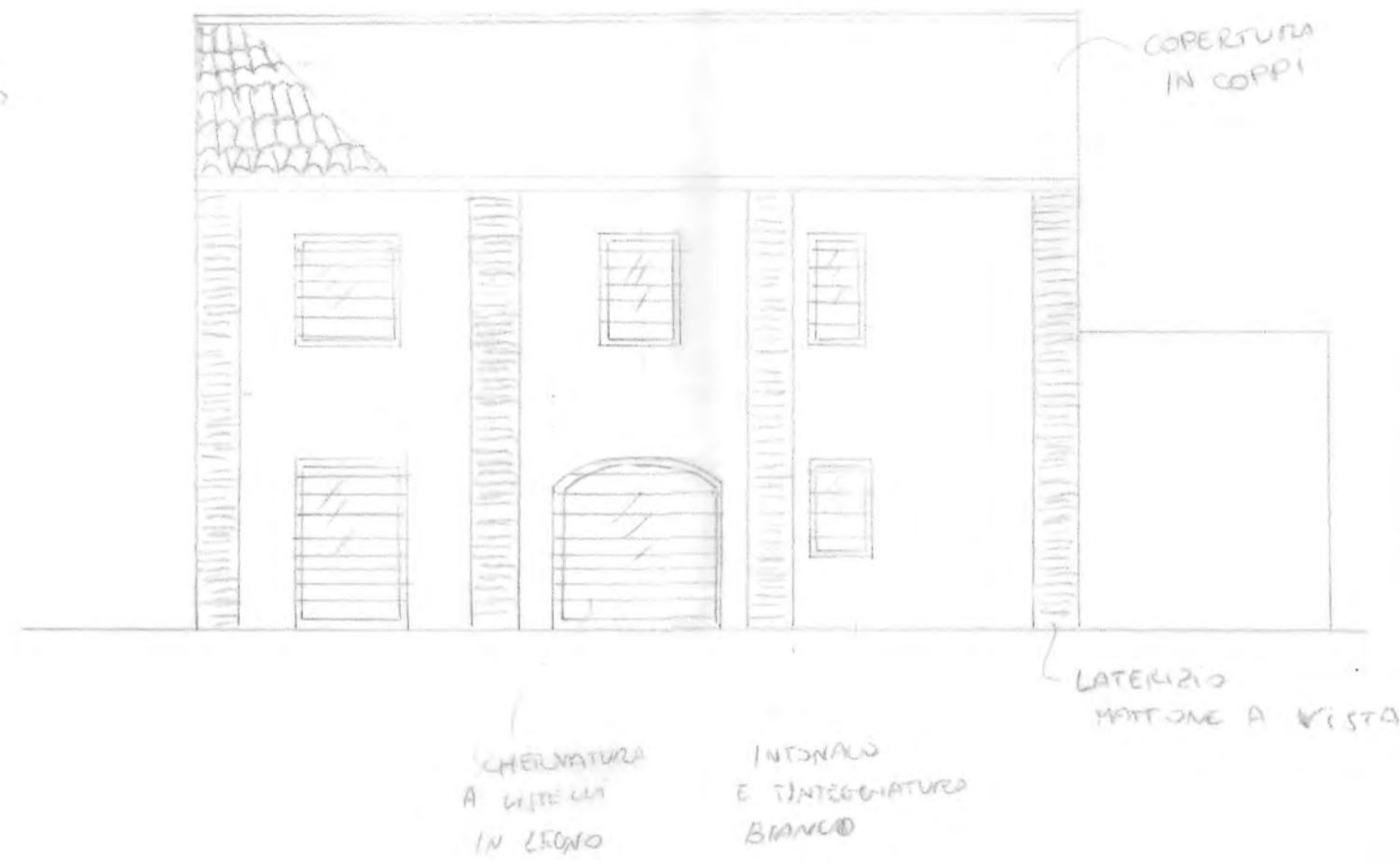


TRACCIA 2

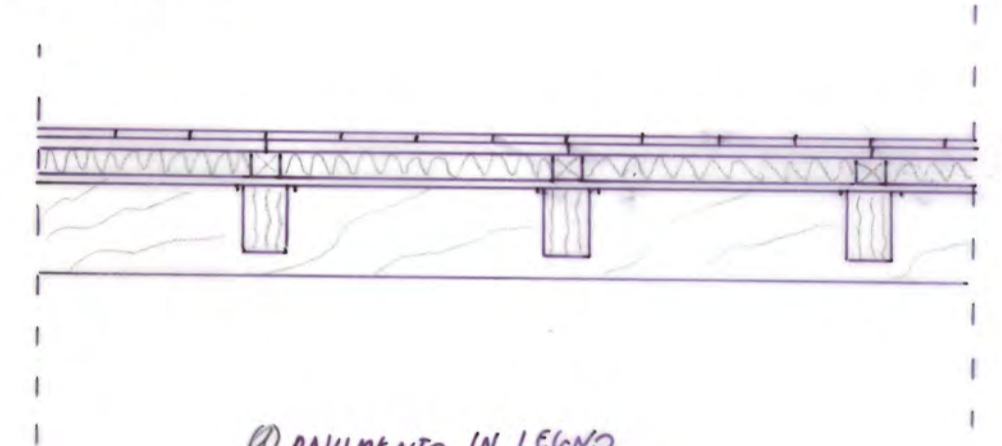
PROSPETTO FRONTALE SUD SCALA 1:100



PROSPETTO LATERALE OVEST SCALA 1:100



PARTICOLARE COSTRUTTIVO - SOLAIO INTERPIANO IN LEGNO
SCALA 1:20



- ① PAVIMENTO IN LEGNO
- ② ASSITO
- ③ ISOLANTE TERMO-ACUSTICO
- ④ LISTELLI IN LEGNO LAMELLARE
- ⑤ TRAVETTI SECONDARI LEGNO LAMELLARE
- ⑥ TRAVE PRINCIPALE LEGNO LAMELLARE

MANCA IL TERZO PROSPETTO